 EnerTech Global, LLC 2506 S. Elm Street Greenville, IL 62246 <a href="http://www.enertechgeo.com">www.enertechgeo.com</a>	<b>TECHNICAL BULLETIN</b>	<b>DOC. #:</b>	QMS-TSF-001
	<b>Carlo Gavazzi: Field Installed Soft Start Kits</b>	<b>TEMPLATE REV DATE:</b>	05/19/2016
		<b>TB #:</b>	TB17.003
		<b>PUBLISH DATE:</b>	11/16/2017

**Affected Models:**

<b>Carlo Gavazzi Soft Start Kits</b>	
<b>Part Number:</b>	<b>Description:</b>
AKSSSD	*XT Soft Start Kit (2 & 3 Ton Models)
AKSSLD	*XT Soft Start Kit (4, 5, & 6 Ton Models)
AKSSSE	Legacy Soft Start Kit (*HT024-036 & *ST024-036 Models)
AKSSLE	Legacy Soft Start Kit (*HT048-060, *ST048-072, & *WT036-060 Models)
AKSSSF	*YT Soft Start Kit (2 & 3 Ton Models)
AKSSLF	*YT Soft Start Kit (4, 5, 6 Ton Models)
AKSSSG	*VS/*VT Soft Start Kit (2, 2.5, & 3 Ton Models)
AKSSLG	*VS/*VT Soft Start Kit (3.5, 4, 5, & 6 Ton Models)
AKSSSH	*ZS/*ZT Soft Start Kit (2, 2.5, & 3 Ton Models)
AKSSLH	*ZS/*ZT Soft Start Kit (3.5, 4, 5, & 6 Ton Models)

**Issue:**

It has recently come to EnerTech's attention that some technicians may be installing soft start kits incorrectly in the field, leading to various premature soft start kit failures.

When installing these kits, it is *extremely* important that the following step is being completed:

- 1. The red and black wires that connect to the 'L1' and 'L2' terminal on the soft start module MUST connect to 'L1' and 'L2' on the LINE side of the contactor.**

As a reminder, it is also important to make note of the following:

2. After disconnecting the red, black, and yellow wires that run from the compressor to the contactor the lugs MUST be tightened down, or a loose/ faulty connection may result.
3. The solid yellow wire, that runs from the 'S' terminal on the soft start module to the capacitor, MUST go to the same side of the capacitor as the solid yellow wire from the compressor. The yellow/black wire connects to the opposite side of the capacitor.

See the below schematic for additional details.

Please direct any requests for additional information & specific application or installation related questions to EnerTech Tech Support at 618-664-5860.



Enertech Global, LLC  
 2506 S. Elm Street  
 Greenville, IL 62246  
[www.enertechgeo.com](http://www.enertechgeo.com)

**TECHNICAL BULLETIN**

DOC. #:

QMS-TSF-001

**Carlo Gavazzi: Field Installed Soft Start Kits**

TEMPLATE REV  
 DATE:

05/19/2016

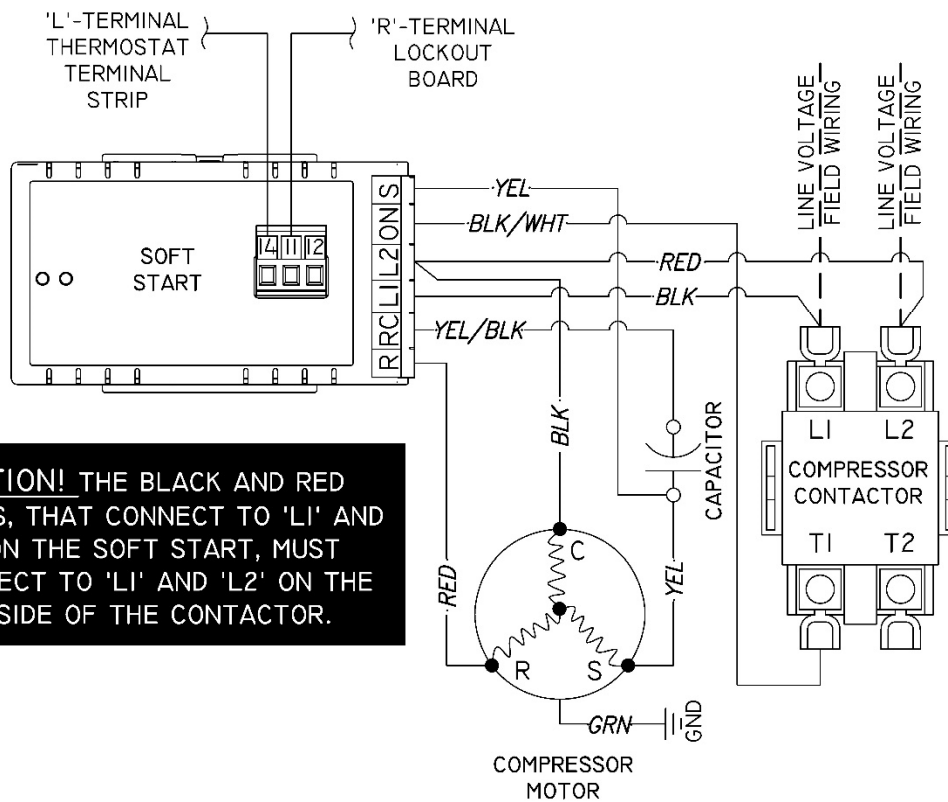
TB #:

TB17.003

PUBLISH DATE:

11/16/2017

RSBS SOFT START WIRING



Please direct any requests for additional information & specific application or installation related questions to Enertech Tech Support at 618-664-5860.